



LUXEMBOURG CITY FILM FESTIVAL

DOSSIER PÉDAGOGIQUE

13ème édition
2→12 / 03 / 2023



KIND HEARTS

Olivia Rochette, Gerard-Jan Claes | BE, 2022 | 87' | Flemish, French OV with English or French subtitles |
Docudrama, first love



© Olivia Rochette, Gerard-Jan Claes – Lucas Roefmans, Billie Meeussen

KEYS WORDS

- Documentary
- Docudrama
- Love story
- First love
- Break-up
- Couple
- Study
- Student
- Student life
- Future
- Life choices
- Brussels
- Belgium

An entrancing and candid portrait of first love, *Kind Hearts* focuses on Billie and Lucas, a young Brussels couple, who face a year rife with change when they leave for university. They talk about their plans for the future, doubts about relationships and the expectations of adult life. The documentary deals with the practicalities of a romantic relationship but adopts a loving gaze at how Billie and Lucas relate to the world and each other.

A tender portrait of first love at a time of great choices.

Navigating between documentary and fiction, Olivia Rochette and Gerard-Jan Claes try to find a certain essence of adolescence. The big questions are mixed with the more banal, but no less beautiful, moments of everyday life, and tell the story of this strange age when so much is decided.



Introduction and debate with the two filmmakers, Olivia Rochette and Gerard-Jan Claes and the media class from the Lycée Robert Schuman.



For the first registered classes, we offer the possibility of an introduction in film analysis and the selected film before the Festival.



With the support of the *Œuvre Nationale de Secours Grande-Duchesse Charlotte*.

SCHOOL SCREENING

02/03 at 9 am – Ciné Utopia (*end – 12 am*)

SUGGESTED TOPICS OF DISCUSSION

DOCUMENTARY, FICTION, LOVE STORY

- What is a documentary? What is a docudrama? Have you ever watched a docudrama? What were they about?
- Does this representation of the couple and the break-up correspond to the representations you usually see in films and series? What differences do you notice? From your point of view, how are love stories represented and told?
- Watch this extract below from *CONTE D'ÉTÉ* from director Éric Rohmer. Based on this extract and some research you have done on this director, explain how his films relate to *KIND HEARTS*. Does *KIND HEARTS* remind you of other films, literature, etc.? Why?
 - Film clip *CONTE D'ÉTÉ*, 1996 : https://www.youtube.com/watch?v=A_85UogPP0g
- Draw a portrait of Billie and Lucas. What characterizes them? What are their hobbies, passions?
- How do Billie and Lucas feel about their relationship and the idea of a possible break-up?
- How does the story progress?
- And you, what do you want to do after high school? Where do you see yourself in a few years?

FILM ANALYSIS

- In your opinion, what parts in the film are fictional? What parts are documentary?
- To produce this docudrama, the director and the producer thought of soap opera. What are the characteristics of a soap opera? Do some research. How close is the treatment of *KIND HEARTS* to a soap opera?
- What happens in the opening sequence of the film? How are we introduced to the young couple? How do they interact? Are they close? Why do you think the director made this choice? You can use the images below to help answer the questions.



Images 1.

Example: The film opens with a sequence at a funfair and focuses on the reaction of several people on a thrill ride as it starts up. Suspended several meters above the ground, these people seem to be out of time. Each person experiences the moment in their own way and the atmosphere is relaxed. Among them, we discover Billie and Lucas and their complicity (intimacy? – complicity is quite negative). This sequence introduces a lot of mildness (tenderness?) that we will find throughout the film.

- Throughout the film, we notice that the story progresses in time. What clues indicate the progression of the story? You can use these pictures to help you find the answer. Maybe you noticed other details in the film.

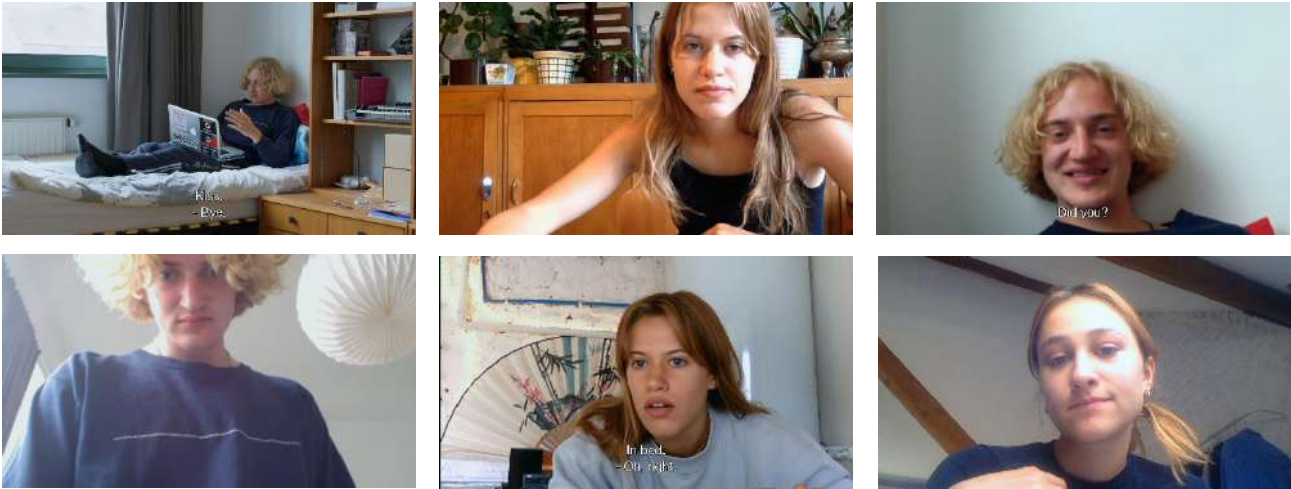


Images 2.

Throughout the film, various details indicate that the story is progressing in time. These markers may come from the seasons. In the first image everyone is in t-shirts at an open-air cinema, while in the second image the streets are covered in snow. The news also informs us of this temporality. While she is studying, Billie listens to the news

about the coronavirus. Then in the second image, Lucas is on public transport wearing a mask. These last two elements further establish the timeline and ground the story in reality.

- The protagonists are not only filmed with a camera but also with a webcam. How do you recognize this change of camera? Why do you think the director made this choice? What does it bring to the film?



Images 3.

Example: On several occasions, the protagonists communicate via video calls on their computer. We observe them through the eye of their webcam. This change can be seen on the one hand through the quality of the image (the grain of the image is different) and on the other hand through their posture in front of the camera: camera gaze, very unstable image, camera manipulation. These moments add a form of authenticity and spontaneity. We have the impression of entering a little more into their intimacy.

The images in this educational material can be downloaded via this link: <https://www.luxfilmfest.lu/wp-content/uploads/2023/01/Kind-Hearts.zip>